



Rooftop Solutions

EnviroTech

Soil Solutions, Inc.

www.axisplayball.com
866-546-3722

AXIS has the Right Properties:

- Low Bulk Density - 25 lbs. per cubic foot (dry) and 52 lbs. when saturated.
- Extremely Porous - 82% Porous to maintain Infiltration and Drainage
- Reduces Irrigation - High Percentage of Plant Available Water
- Does Not Decompose - Soil Volumes installed Remain Constant
- Transfers Air & Water - Plants respond with More Vigor and Rootmass
- Distributes Moisture Evenly - AXIS Increases Hydraulic Conductivity
- Blends Easily with Other Soil Components - Works great with Sand & Organics

JEFFERSON PARK EXPANSION PHASE 1

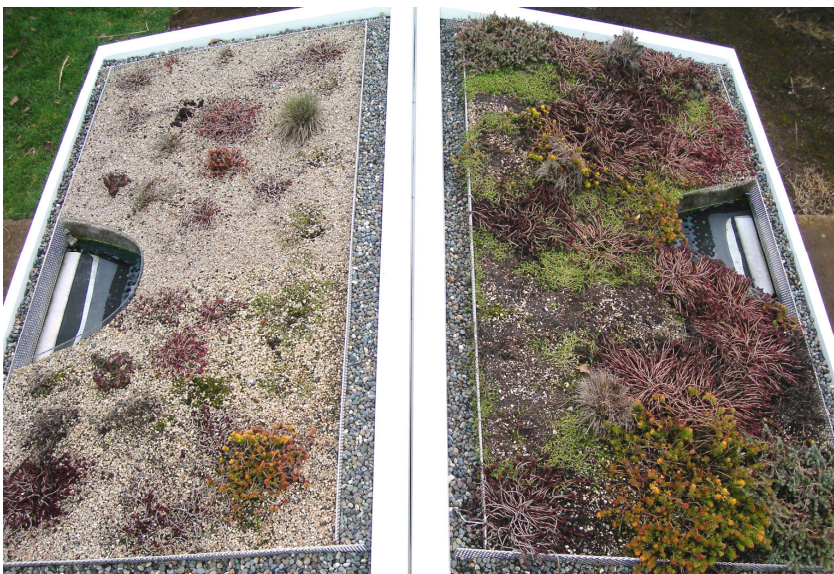


City of Seattle - Water Reservoir Roof

A concrete roof was built over an existing Water Reservoir and used to increase Park Space for the City of Seattle.

AXIS was tested against other products at various rates and was applied at 10% by volume as the best cost/benefit ratio in the Sports Meadow area.

This area is large enough for 3 full-size soccer fields, as pictured to the right.



Clackamas Community College - Greenroof Modules

Side by side comparison of green roof mixes, with and without AXIS.

Far left: 2 commercially available green roof mixes without AXIS.

Left: Rooftop media with 25% AXIS and a little fertilizer.

Note: No Irrigation is Applied